

COST Energy & Environment Conference - June 8, 2022
Waste Management: Municipal Challenges & Opportunities

Jennifer A. Heaton-Jones
Executive Director, HRRA

History of the HRRA

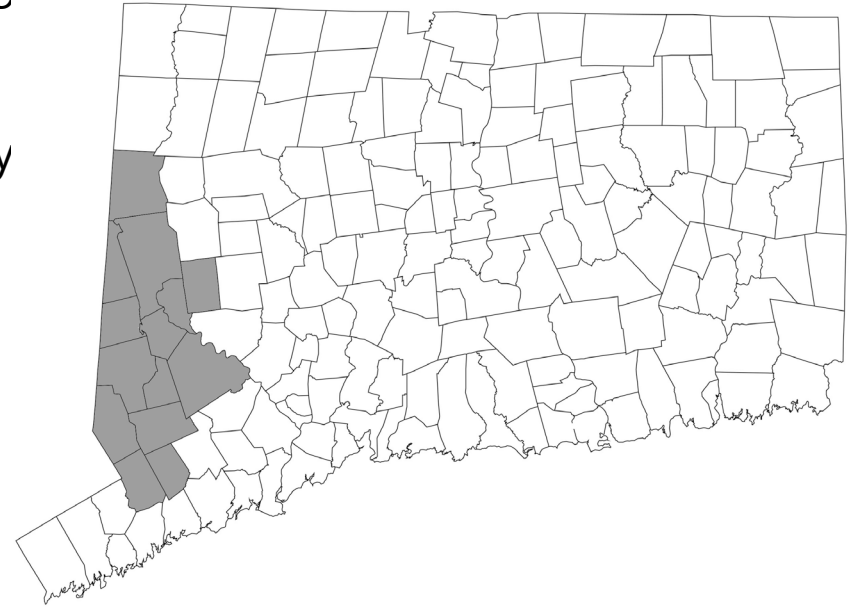


- CT DEEP stopped permitting landfill expansions and closed landfills late 1980's
- Studies undertaken by the HVCEO began the creation of HRRA
- Created July 1986 through concurrent municipal ordinances
- Considered a municipal agency under CGS 7-273aa -7-273oo
- Contracted with Wheelabrator Bridgeport, 1991
- Took on regional recycling 1991
- Contracted with Recycling Technologies Inc. (RTI), 1991
- Contracted with Winters Brothers Waste Systems of CT for recycling, 2013
- Contracted with Oak Ridge in 2019 for a 10 year agreement for MSW & Recycling

The HRRA Organization



- 14 Member Municipalities (*Bethel, Bridgewater, Brookfield, Danbury, Kent, New Fairfield, New Milford, Newtown, Redding, Ridgefield, Roxbury, Sherman and Weston, Wilton*)
- One representative and one alternate from each municipality
- Executive Committee, chosen by Authority
- Voting is proportional to municipality's population
- Staff: Full time Director, Full time Assistant
- Office is located at the Old Town Hall in Brookfield, CT
- 14 Municipalities with 12 Transfer Stations



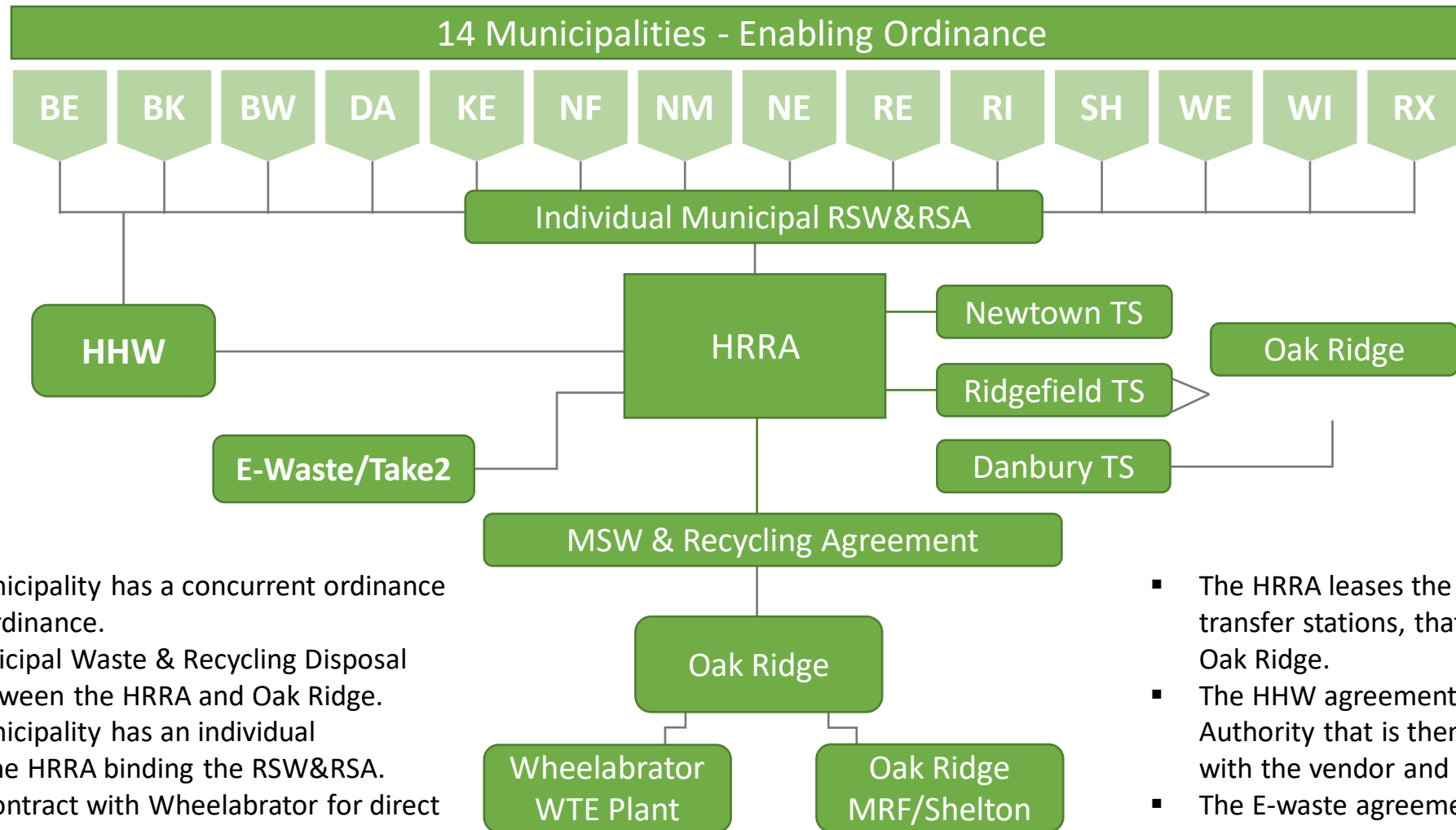
Municipal Responsibilities Under State Law



- Sec. 22a-220 (a) –Shall make provisions for the **disposal of solid waste**
- Sec. 22a-220c (a) –Shall **notify haulers** of recycling requirements
- Sec. 22a-220 (f) –Shall make **provision for the separation of designated recyclables**
- CGS 22a-220 (h) - Shall submit an **annual recycling report** to DEEP
- Sec. 22a-220 (i) – Shall designate a **recycling coordinator**
- Sec. 22a-220a (d)(1) –Shall **register haulers** annually
- Sec. 22a-220a (d)(2) – Shall **collect reports** from haulers annually
- Sec. 22a-229 (a) – Shall **follow statewide solid waste plan**



HRRA Current Contracts



- Each member municipality has a concurrent ordinance aka an enabling ordinance.
- The Regional Municipal Waste & Recycling Disposal Agreements is between the HRRA and Oak Ridge.
- Each member municipality has an individual agreement with the HRRA binding the RSW&RSA.
- Oak Ridge has a contract with Wheelabrator for direct disposal.
- Oak Ridge owns and operates the Material Recovery Facility.

- The HRRA leases the Newtown and Ridgefield transfer stations, that are then operated by Oak Ridge.
- The HHW agreement is negotiated by the Authority that is then contracted directly with the vendor and members.
- The E-waste agreement is negotiated and contracted with the Authority and the vendor.

HRRA Responsibilities



- Register haulers for municipalities
- Maintain and update haulers' insurance requirements naming municipalities
- Investigate complaints regarding haulers and recycling issues
- Support with annual municipal recycling reporting
- Track MSW tonnage and recycling
- Keep municipalities current on state/national solid waste issues
- Public Education programs and material
- Public Q&A Hotline
- Facilitate household hazardous waste (HHW) collections
- Moderate Regional Recycling Task Force
- Facilitate Transfer Station Operators meetings
- Provide recycling education and outreach
- Negotiate regional agreements (HHW, E-Waste, Textiles etc.)
- Maintain extensive educational website and pages for each member
- Assist with implementation of stewardship programs
- Act as clearinghouse for legislative issues
- Represent the region at State Solid Waste Advisory Committee
- Consult to municipal transfer stations and ad hoc committees as requested
- Technical Assistance to member towns
- Assist in municipal grant applications
- Assist in implementing new municipal programs
- Represent regional interests with Legislature and CT DEEP
- Field calls from public and municipal agencies



Connecticut's Waste Crisis Danbury, CT July 2021



**The unwanted
& discarded...**





Everyone, every, one... generates waste

When is trash day?





**Setting the course and
deciding on a direction**



Waste & Recycling Challenges



Aging Infrastructure





**Limited In-State
Disposal Capacity**

Hartford WTE Plant Closure



NOVEMBER 2-3, 2022 | SWISSOTEL CHICAGO

C O R P O R A T E
G R O W T H
C O N F E R E N C E

waste
today

Corporate Waste Industry Control



Lack of Municipal Waste and Recycling Coordinators



Human Behavior & Bad Recycling Habits



Single Stream was a solution that became a problem

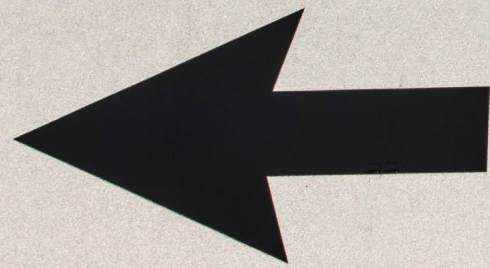
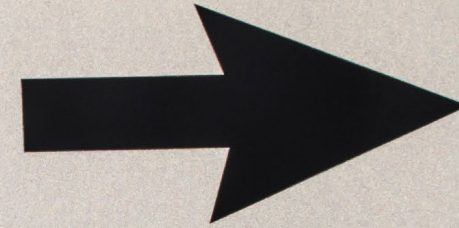


Why so much contamination in Single Stream?



**Not everything should go
into Single Stream.
Do you know what this is?**

CRISIS



OPPORTUNITY





Opportunities can lead to proven solutions

LINEAR ECONOMY

Materials in a **Linear Economy** create waste after use.



VS.

CIRCULAR ECONOMY

Materials in a **Circular Economy** are collected and reused after each use.





Waste Reduction – Waste that never gets created and doesn't have waste management costs. Or...

Reducing the amount of materials entering the waste stream from a specific source by redesigning products or patterns of production or consumption (e.g., using returnable beverage containers). Synonymous with Source Reduction. *(EPA Glossary)*

Source Reduction – *Reducing the amount of materials entering the waste stream from a specific source by redesigning products or patterns of production or consumption (e.g., using returnable beverage containers). Synonymous with waste reduction. (EPA Glossary)*

Material Management Solutions



Extended Producer Responsibility (EPR)

Paint, Mattresses, Thermostats, E-waste, Certain Gas Cylinders

Source Separation Programs

Textile Recycling

Municipal Organic Collection (*Local, easy and convenient*)

Bag bans (*change human behavior*)

Plastic Film Return to Retail (*System solutions*)

Deposit Systems (*Financial incentives*)

Unit Base Pricing

At the curb and at our transfer stations

Recycling Right

Reducing cost, increasing value





MRF Glass

Prescription
bottles,
bottle caps,
shredded paper,
batteries &
other bits

**DO NOT
BELONG**



Think outside the box



Entsorga – West Virginia

MECHANICAL AND BIOLOGICAL TREATMENT PLANT







QUANTUM
BIOPOWER



Quantum BioPower - Southington, CT
ANAEROBIC DIGESTION



New England Compost - Danbury, CT

WINDROW COMPOSTING



ORGANICS RECYCLING CONTAINER (Food Scraps ONLY)

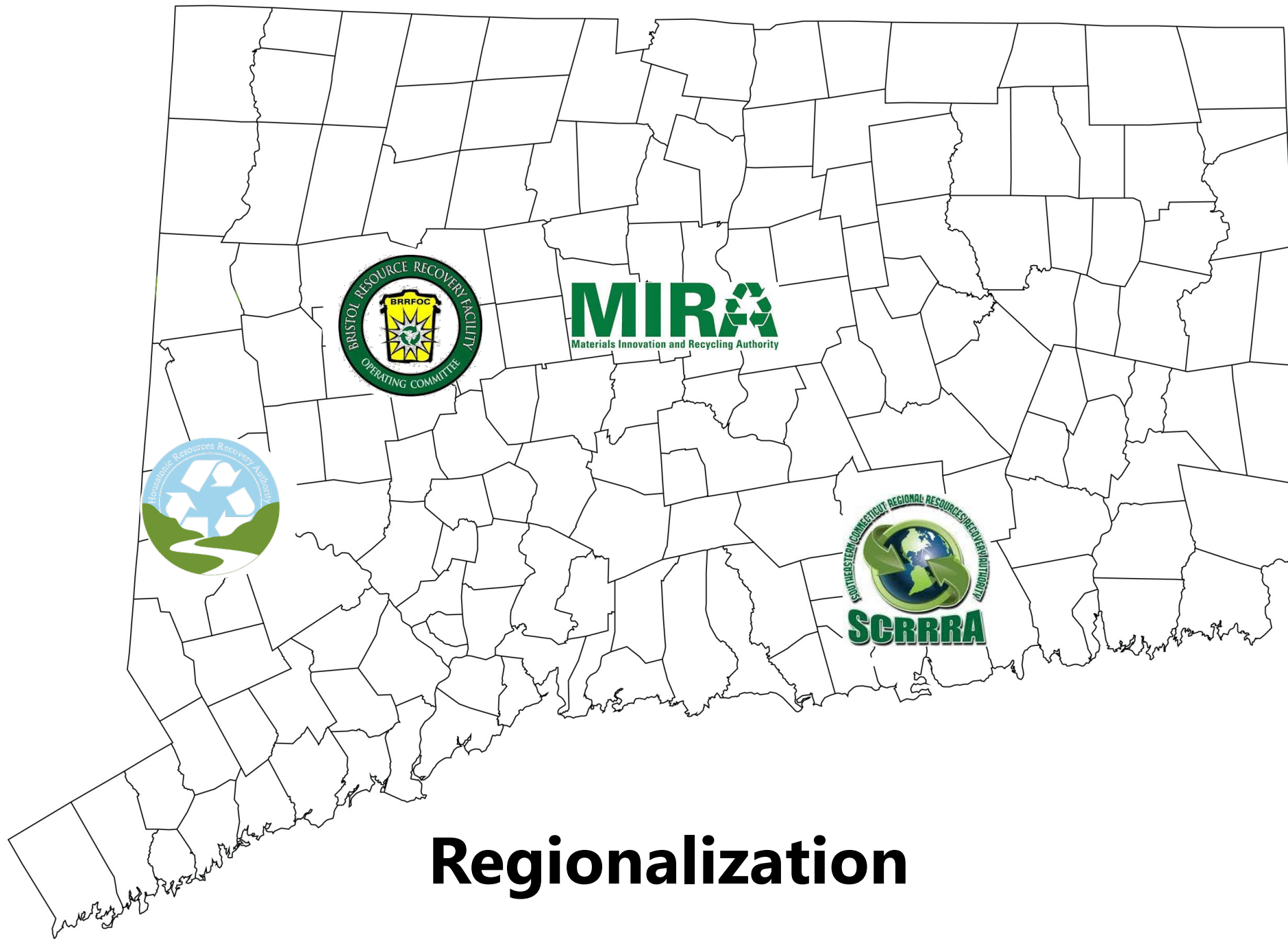
IMPORTANT RULES:

- Organic waste **ONLY!**
- Compostable bags only - **NO Plastic bags!**
- **Do not** tie a knot in the compostable bags!
- **No plastic items, stickers, rubber bands or twist ties!**
- **No yard waste, including grass, leaves, sticks, or branches.**
- **No animal products, including meat, bones, dairy, or fish (including shellfish).**
- **No oils, fats, or greases, including cooking oil.**
- **No coffee grounds & filters.**
- **No household appliances, electronics, or other non-organic items.**

Municipal Onsite Composting- Ridgefield, CT

SOLAR POWERED ASP COMPOSTING





Regionalization



We recognize that by working together, we have the potential to achieve economies of scale and send a strong signal for private investment and sector transformation. At the same time, we respect the unique needs and policy preferences of each participating jurisdiction, and the importance of flexible approaches. We recognize that each municipality can contribute in different ways, through different measures, to achieve our shared goals.

We welcome all municipal partners that would like to join us in this endeavor. – CT DEEP



It starts and ends at the curb



Political Will & Leadership



Jennifer Heaton-Jones

203-312-1071

Jennifer@hrra.org

www.HRRA.org

Sited comments:

https://ec.europa.eu/environment/pdf/circular-economy/new_circular_economy_action_plan.pdf

<https://www.europarl.europa.eu/news/en/headlines/priorities/circular-economy>

<https://www.waste360.com/recycling/epr-end-single-stream-recycling>

<https://www.nature.com/articles/s41598-018-21326-9>

<https://www.globalcitizen.org/en/content/global-waste-facts-plastic-fashion-food/>